

cspace Marda Loop



cSPACEMardaLoop.com

Hallway
Galleries



Hallway Galleries



› Art Exhibitions

› Receptions

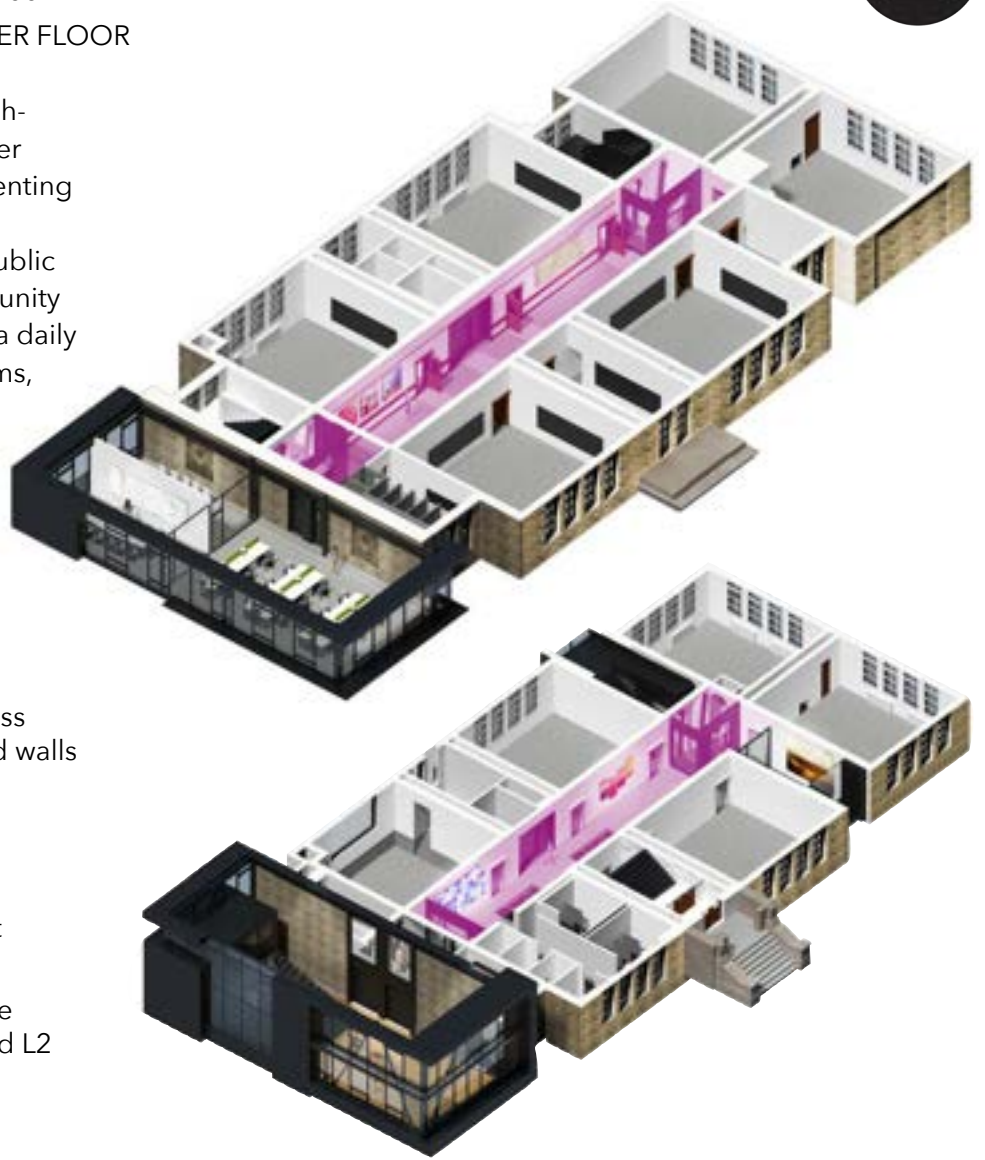
› Art Markets

› Community Showcases



SQ. FOOTAGE – APPROX. 1,200
MAX OCCUPANCY – 200 PER FLOOR

The Hallway Galleries provide high-traffic exhibition opportunities over four floors where artists and presenting organizations can show, sell, and promote their work to both the public and to the diverse creative community that calls the arts hub a home on a daily basis. Professional hanging systems, highly adaptable lighting and fibre connectivity allow for unique exhibition opportunities for multi-disciplinary work.



Features

- > 13' high ceilings with historic character features including glass floor and full height chalk board walls
- > Professional gallery lighting and hanging systems
- > Dimmable LED lighting 'cloud'
- > Integrated audio/video support on Levels 1 and 2
- > Mobile speaker system available and built-in PA system on L1 and L2
- > Reception space
- > Public WiFi
- > Fully accessible



Location

cSPACE Marda Loop is an arts hub, innovative venue and coworking space, centrally located in a vibrant arts friendly neighbourhood, close to 17th Ave and Marda Loop.

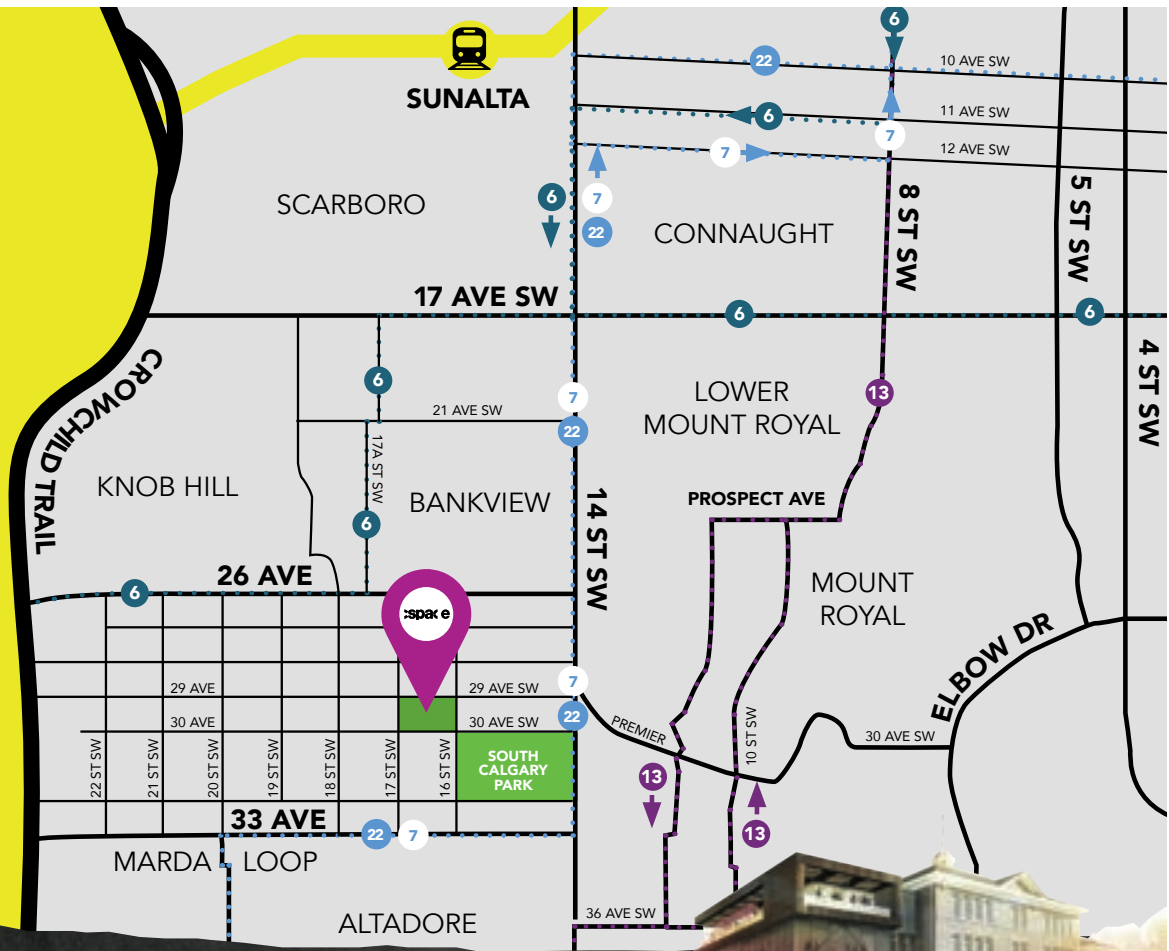
With free parking, cycling infrastructure like bike lockers and showers, convenient access to public transit, and located in the Communauto area, cSPACE Marda Loop is a centrally located hub connected easily to the rest of the city.



C-TRAIN STATION



BUS ROUTES



cspace **MARDA LOOP**

1721 29th Ave SW
cSPACEMardaLoop.com

Hallway Galleries – 2023 Rental Rates

	Non-profits & Artists	Individual & Corporate
Event - Hourly - (Min 3 hrs)/Floor	\$35/hr	\$60/hr
Event - Day/Floor	\$200	\$400
Exhibition - Week/Floor	\$300	\$600
Exhibition - 2 Weeks/Floor	\$550	\$1000
Exhibition - 1 Month/Floor	\$850	\$1,600

Hallway Gallery FAQ's

cSPACE | MARDA
LOOP





INSTALLATION TIPS

- Renters are responsible for their own show installation. cSPACE provides an adjustable cable hanging equipment system that works best with two D-rings on the back of each piece. Ladders are also provided.
- There are limits to the hanging equipment we have onsite. Please let cSPACE know how many pieces you will be hanging.
- Multiple pieces may be hung on each wire. Please avoid bending or kinking wires.
- Please do not hang work over hallway/tenant signage. On Levels 2/3/4 work looks best when hung above the wooden railing.
- Please do not use tape of any type on the walls as it pulls off the paint. Sticky tack is acceptable.
- Renters will sign a equipment sheet after installation and takedown, accounting for the equipment they have used. Charges for lost equipment apply.

RESTRICTIONS

- Shows are typically hung on Mondays, and taken down the following Monday but work can be installed/de-installed at other times (please confirm with cSPACE). Note that the building is closed to the public on Sundays and Stat Holidays.
- Artists can sell out of the space, cSPACE does not take commission. It is up to the show organizer to provide direct contact information to viewers for sales.
- If work is sold, please leave it on the walls until the scheduled takedown time.
- Renters are invited to hold one (1) exhibition opening during their show. Please speak with cSPACE about availability of the space for your reception, and note that fees for insurance/staffing/furniture and more than one reception etc. may apply.

WEIGHT CAPACITY GUIDLINES

- Historic Picture Rail - Each installation on the historic picture rail must assess the condition on a case-by-case basis. Please inform cSPACE staff if there are any concerns noted during hanging.
- Contemporary Track: Each 6'-0" section not to exceed 300 lbs
- Picture Molding Hanger: 33 lbs (15 Kg)
- Steel Cables: minimum of 45 lbs (20 Kg) per cable
- Secure Gripper Hooks: 40 lbs (18 Kg)
- Please note that any combination of elements is only as strong as the weakest member of the system

Artist Opportunity: Gallery Shows

cspace



cSPACEProjects.com

Hallway
Galleries



Hallway Galleries



› Art Exhibitions

› Receptions

› Art Markets

› Community Showcases



The Hallway Galleries provide high-traffic exhibition opportunities over four floors where artists and presenting organizations can show, sell, and promote their work to both the public and to the diverse creative community that calls the King Edward home on a daily basis. Professional hanging systems, highly adaptable lighting and fibre connectivity allow for unique exhibition opportunities for multi-disciplinary work.

Features

- > 13' high ceilings with historic character features including glass floor and full height chalk board walls
- > Professional gallery lighting and hanging systems
- > Dimmable LED lighting 'cloud'
- > Integrated audio/video support on Levels 1 and 2
- > Mobile speaker system available and built-in PA system on L1 and L2
- > Reception space
- > Public WiFi
- > Fully accessible



cSPACE: CALL FOR GALLERY SHOWS

cSPACE is a vibrant arts hub located in the inner city neighbourhood of Marda Loop. Our building is home to 35 arts and culture tenants, a coworking space, coffee shop, Theatre and event spaces, and four levels of hallway galleries. We welcome individual artists, group shows, registered non-profit organizations, and educational institutions to apply to this call.

RENTAL PRICING:

- \$350 per two week show run, \$500 per month long run. If an entry fee or commission on sold work is charged to artists in a group show, the creative industry rate of \$720 per two week show will apply.
- Pricing is per gallery level, multiple levels may be rented.
- Artists looking to book out specific dates or hallway levels will be subject to regular gallery charges as per the cSPACE website.
- Over summer (July-August), shows will be 1-2 months long, for the same pricing.
- cSPACE does not take commission on art sales.

PRICING INCLUDES:

- Access to our hanging system, and use of the walls of our full hallway space for either two or four weeks.
- Promotion on our event website, newsletters, and social sites
- One reception event during your show. Receptions will be held on the second Thursday of your show, in conjunction with other gallery openings (increasing your traffic flow!)
- Access to general building traffic through our space for theatre events, tenant events, our coffee shop and Farmers Market. We are located in the desirable neighbourhood of Marda Loop.

WHAT WE REQUIRE FROM YOU:

- Shows are self installed - cSPACE provides an adjustable cable hanging equipment system that works best with two D-rings on the back of each framed piece. Ladders are also provided. cSPACE staff will provide suggestions for hanging, and may adjust work if hung incorrectly.
- Installation Dates: Monday afternoons. Takedown dates: Monday mornings. *Daytime and evening times available. Installation dates will be scheduled during business hours when our staff are onsite.
- Pieces cannot not be taken down outside of the set install dates, and sold pieces must remain on the wall until the allotted takedown time
- Provide work that is appropriate for the public, in a building that houses Montessori children.

- Gallery capacity: L1/3/4: up to 40 pieces L2: up to 20 pieces
- We may have the capacity for more pieces depending on how many works are showing on other floors.
- Three plinths are also available for 3D works, upon request, but may only be used in L1/3/4 from June-Sept, or on L2 year-round.
- Host a reception for your show (on the scheduled date) and invite your guests. You will be responsible to secure your own private liquor license for the event if you would like to serve drinks to your guests.
- Provide a method for interested parties to contact you directly regarding sales (eg. email/ phone number listed in your gallery tag).
- Complete a post event survey

TO APPLY PLEASE PROVIDE (as a single PDF file):

- Your name/names of members in a group show, and proposed show title.
- If you are an entity that charges artists an entry fee or commission on sold work, please provide your terms for participation in the show including pricing and number of artists expected to participate.
- Three (3) high res images of the work to be included in the show, and/or similar representative work
- A 150 word show writeup
- When you would like to ideally show your work? Provide a couple of timing options, and note that we will provide availability based on our other show demands.
- A short paragraph on why you would like to show at cSPACE, and what makes your work unique.

We're excited to hear from you! Please email all submissions to: events@cspaceprojects.com.

