

RGO Treehouse



➤ Conferences & Retreats

➤ Events & Receptions

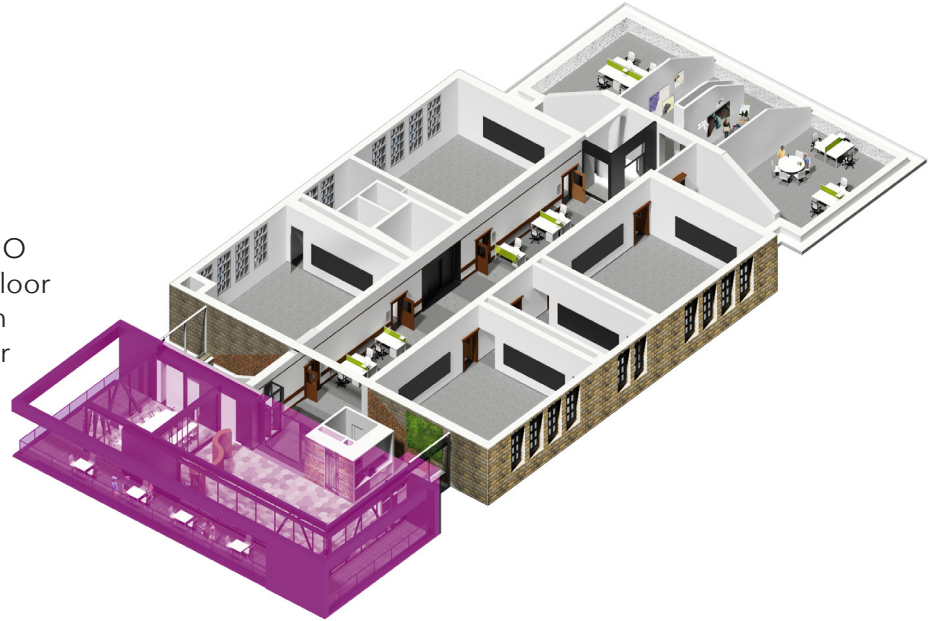
➤ Workshops & Training

➤ Speaker series & screenings



SQ. FOOTAGE – 1,160
DIMENSIONS - 19' by 59'
MAX OCCUPANCY – 60
**CLASSROOM/BANQUET/
WORKSHOP SEATING** – 48
AUDITORIUM SEATING – 60*

Supported with a generous gift from RGO Office Products, the Treehouse is a top-floor meeting and event space wrapped in an arts and design vibe. Three sides of floor to ceiling windows and a panoramic exterior deck offer inspirational, tree-top views to the downtown, ArtPark and mountains. A same floor catering support room and the Hallway Gallery (Floor 4) may be rented in conjunction with this space.*



Included Resources

- > 19' by 59' dimensions
- > North, South and West facing natural light
- > Room darkening blinds
- > Adjustable LED lighting
- > High speed Wifi
- > Portable speakers and sound board available
- > White boards w/ flip chart holders
- > Fully Accessible
- > Direct access to outdoor deck

Additional Resources*

- > HD digital projector and screen (Clickshare USB)
- > Owl video conferencing system
- > For auditorium style events, lightly padded non-rolling chairs are available (up to 60)
- > High-top cocktail tables / linens
- > 50" mobile LED TV cart
- > Mobile PA system available

*Additional charges apply.



RGO Treehouse North

➤ Conferences & Retreats

➤ Classes & Small Gatherings

➤ Workshops & Training

➤ Board Meetings



SQ. FOOTAGE – 423
DIMENSIONS - 19' by 19'
MAX OCCUPANCY – 32 (STANDING)
AUDITORIUM SEATING – 12-25
BOARDROOM/CLASSROOM SEATING – 12-16

A versatile meeting, event and classroom space offering inspiring, tree-top views to the downtown with access to a foyer and outdoor deck. The room can accommodate flexible table and seating configurations with room darkening features. A projector and Owl video conferencing system is available on request. On-site cafe with coffee/tea service available.

Included Resources

- > Flexible boardroom tables and meeting chairs
- > Whiteboard
- > Coat rack
- > Podium (on request)
- > Podium mic, 1 vocal wires mic/
1 handheld wireless available on request

Additional Resources*

- > HD Projector (HDMI input)
- > Owl video conferencing system
- > For auditorium style events, lightly padded non-rolling chairs are available (up to 20)
- > 6' plastic catering tables / linens
- > High-top round cocktail tables / linens
- > 50" mobile LED TV cart
- > Mobile PA system

* Additional charges apply



RGO Treehouse South

➤ Conferences & Retreats

➤ Classes & Small Gatherings

➤ Workshops & Training

➤ Board Meetings



SQ. FOOTAGE – 407

DIMENSTIONS - 19' by 21'

MAX OCCUPANCY – 30 (STANDING)

AUDITORIUM SEATING – 12-25

BOARDROOM SEATING – 12-16

A versatile meeting and classroom space offering inspiring views to ArtPark and the mountains with direct access to a foyer and outdoor deck. The room can accommodate flexible table and seating configurations with room darkening features.



Included Resources

- > Flexible boardroom tables and meeting chairs
- > Whiteboard
- > Coat rack
- > Podium (on request)
- > Podium mic, 1 vocal wires mic/1 handheld wireless available on request
- > Direct access to outdoor deck
- > Fully accessible

Additional Resources*

- > HD digital projector and screen (Clickshare USB)
- > Owl video conferencing system
- > For auditorium style events, lightly padded non-rolling chairs are available (up to 25)
- > High-top cocktail tables / linens
- > 50" mobile LED TV cart
- > Mobile PA system available

* Additional charges apply



Location

cSPACE Marda Loop is an arts hub, innovative venue and coworking space, centrally located in a vibrant arts friendly neighbourhood, close to 17th Ave and Marda Loop.

With free parking, cycling infrastructure like bike racks and showers, convenient access to public transit, and located, cSPACE is a centrally located hub connected easily to the rest of the city.



C-TRAIN STATION



BUS ROUTES



cspace **MARDA LOOP**

1721 29th Ave SW
 cspaceprojects.com

RGO Treehouse - 2023 Rental Rates

Treehouse Full		Treehouse North/South		AV (Projector, Screen, Sound)	
Non-profits & Artists	Corporate & Individual	Non-profits & Artists	Corporate & Individual	Non-profits & Artists	Corporate & Individual
\$90/hr	\$180/hr	\$35/hr	\$70/hr	\$25/day	\$75/day
Daily Maximum Charge		8 hours			
Overnight Fee		3 hour charge			

- > 3 hour minimum charge on all bookings.
- > Extra staffing charges apply on Sundays and after 9pm (\$30/hour).